

Office Space for Lease

19201 East Mainstreet,
Parker CO 80134

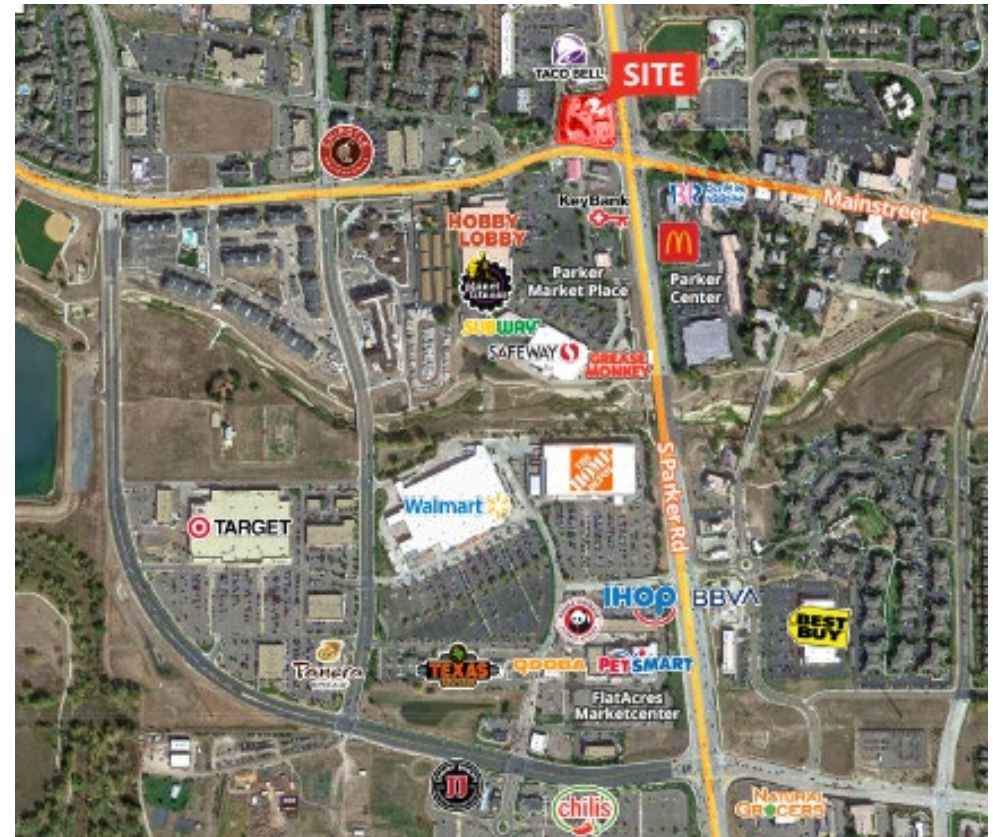
AMPLE PARKING AND ABUNDANT AMENITIES NEARBY

PROPERTY HIGHLIGHTS

- Bank & ATM in lobby
- High ceilings
- Monument signage available
- Strong ownership
- Conveniently located

LOCATION HIGHLIGHTS

- Great access off of Parker Road
- Close proximity to E-470
- Walking distance to shopping and restaurants



LEASE RATE:

\$26.00/SF Full Service

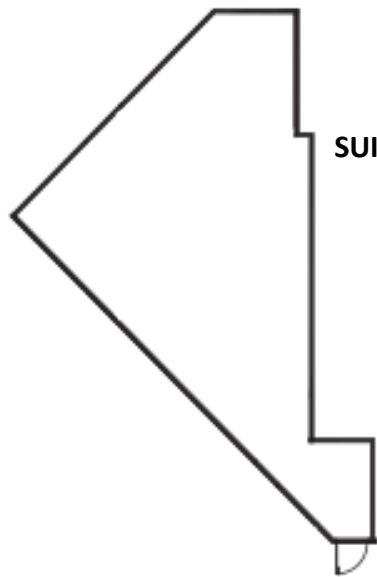
SPACE AVAILABLE:

Suite 104	1,131 SF	Suite 203	1,341 SF
Suite 202	1,707 SF	Suite 206	1,004 SF

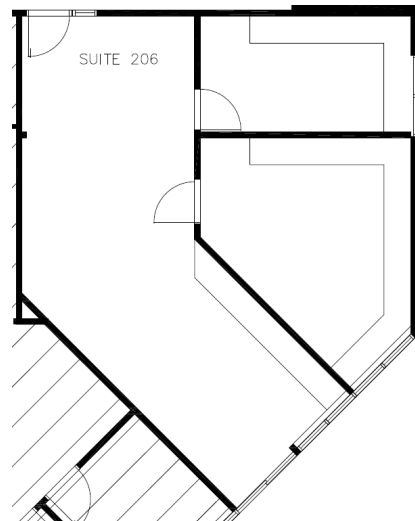
Office Space for Lease

19201 East Mainstreet,
Parker CO 80134

FLOOR PLANS



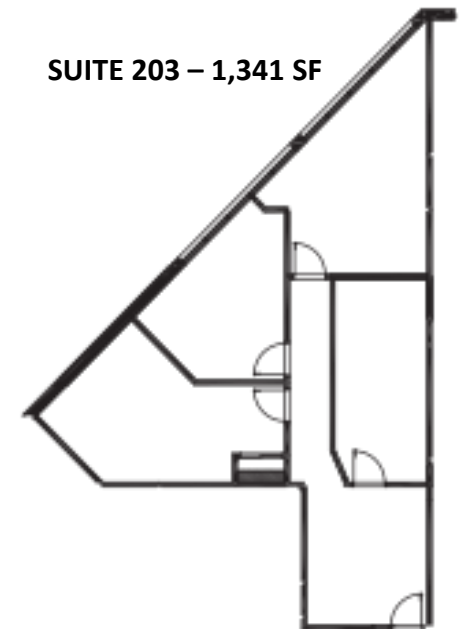
SUITE 104 – 1,131 SF



SUITE 206 – 1,004 SF



SUITE 202 – 1,707 SF



SUITE 203 – 1,341 SF