

# Office Space for Lease

19201 East Mainstreet,  
Parker CO 80134

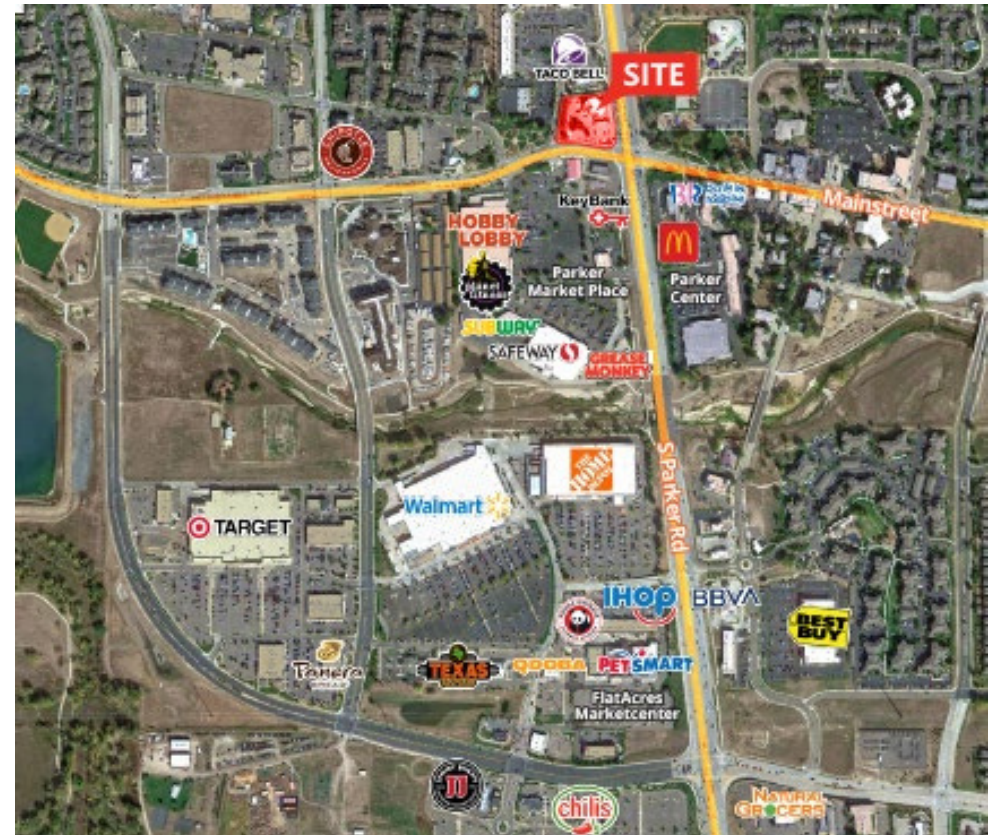
## AMPLE PARKING AND ABUNDANT AMENITIES NEARBY

### PROPERTY HIGHLIGHTS

- Bank & ATM in lobby
- High ceilings
- Monument signage available
- Strong ownership
- Conveniently located

### LOCATION HIGHLIGHTS

- Great access off of Parker Road
- Close proximity to E-470
- Walking distance to shopping and restaurants



**LEASERATE:**  
\$26.00/SF Full Service

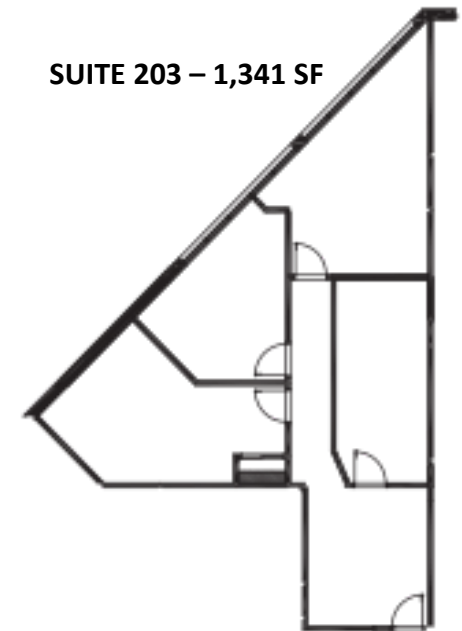
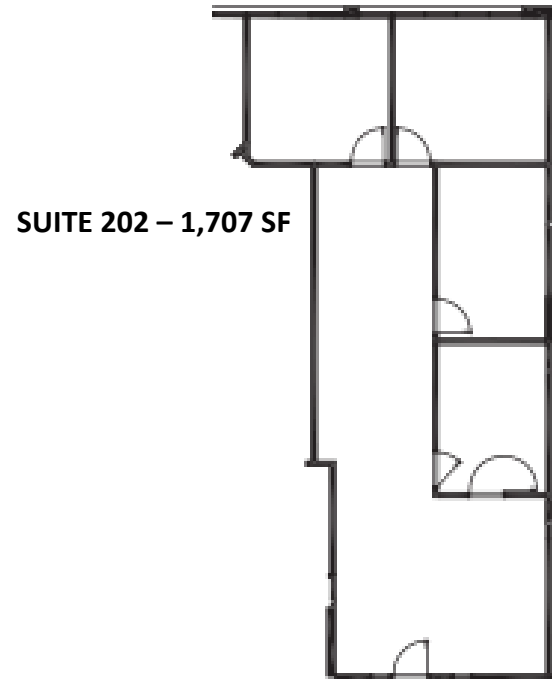
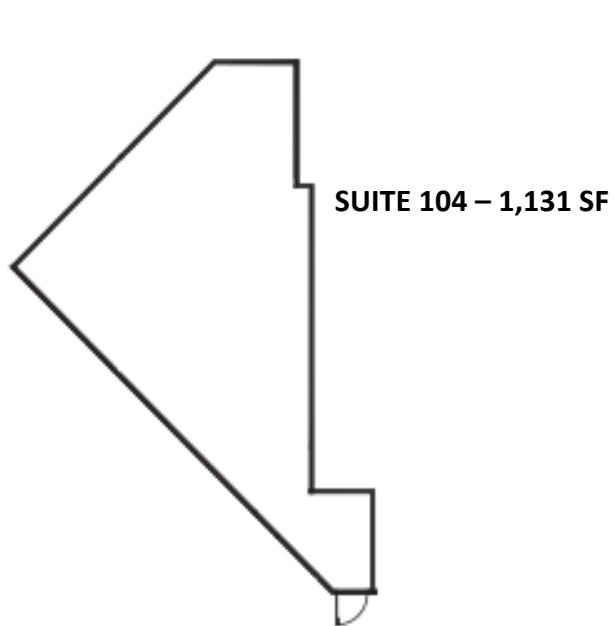
**SPACE AVAILABLE:**

Suite 104	1,131 SF	Suite 204	718 SF
Suite 202	1,707 SF	Suite 205	1,579 SF
Suite 203	1,341 SF		

# Office Space for Lease

19201 East Mainstreet,  
Parker CO 80134

## FLOOR PLANS

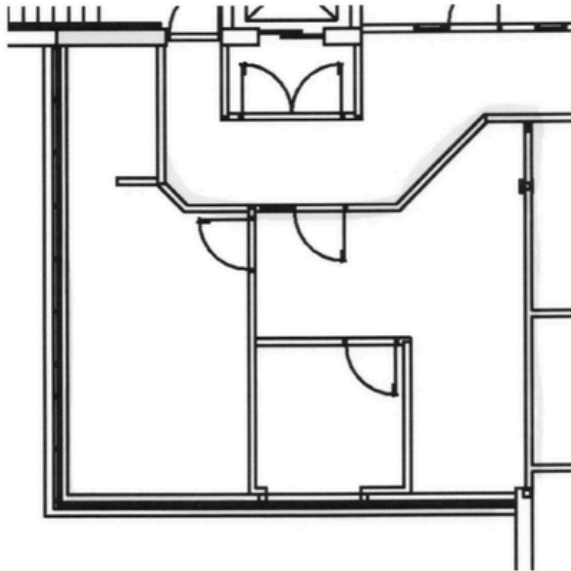


# Office Space for Lease

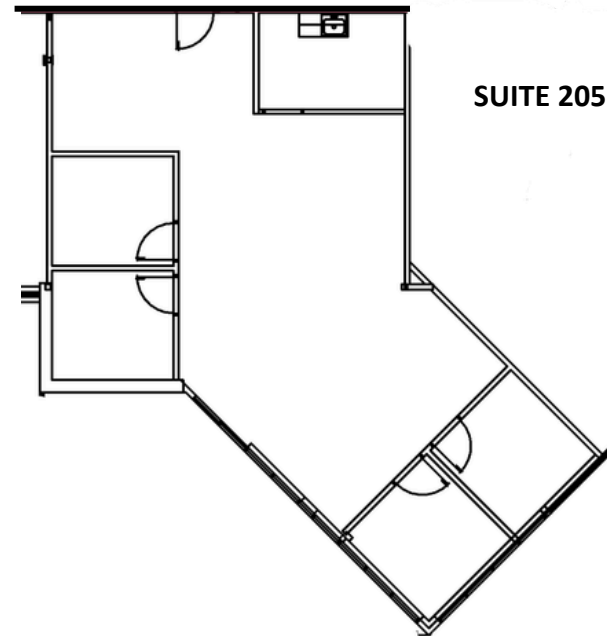
19201 East Mainstreet,  
Parker CO 80134

## FLOOR PLANS

SUITE 204 – 718 SF

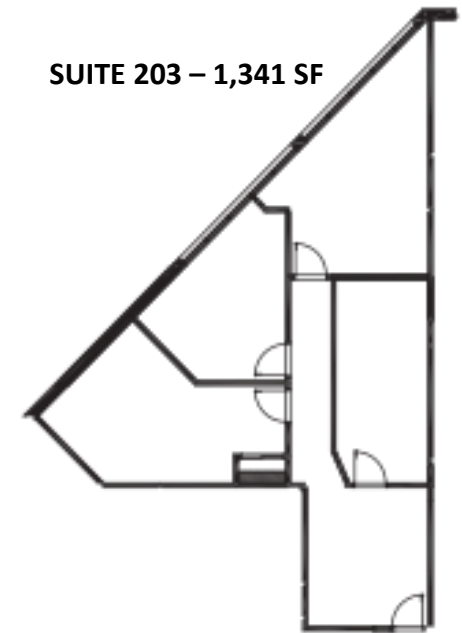
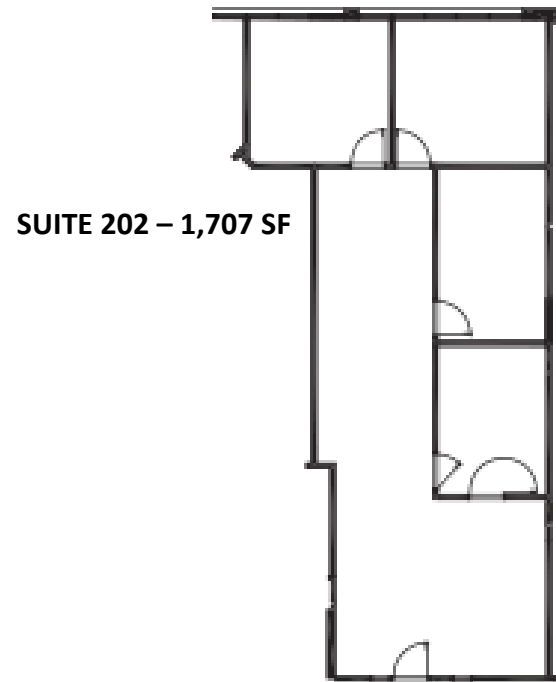
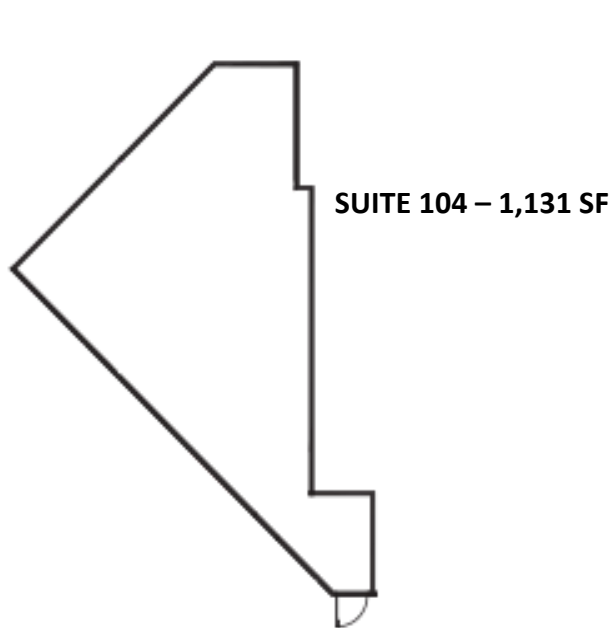


SUITE 205 – 1,579 SF

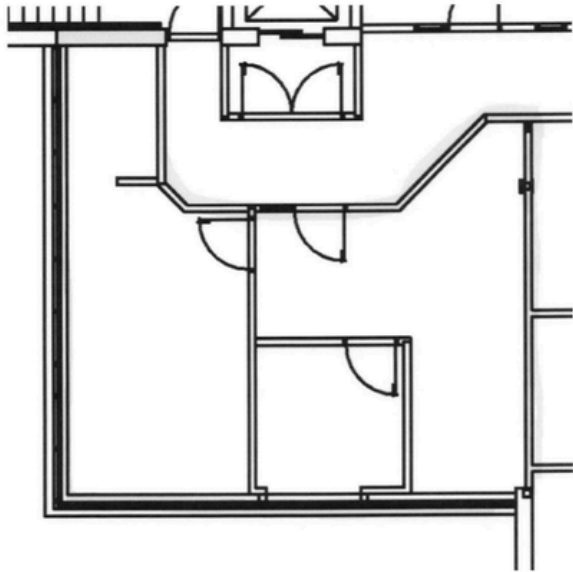


# Office Space for Lease

## FLOOR PLANS



**SUITE 204 – 718 SF**



**SUITE 205 – 1,579 SF**

